

23p.d Savaime išsiplečiantys didelės radialinės jėgos stentai pakinklio arterijoms



PERIPHERAL

PRODUCT PRESENTATION

# Supera™ 5.0 and 6.0 mm

Information contained herein for PRESENTATION in Europe, Middle East and Africa ONLY. Please check the regulatory status of the device before distribution in areas where CE marking is not the regulation in force.

©2020 Abbott. All rights reserved. 2-EH-4-11331-01 06-2020



# Supera™ is like no other stent. Results Matter. Platform Matters.



**91%**  
**PATENCY (K-M) AT 1 YEAR<sup>3</sup>**  
When nominally deployed\*



**94%**  
**FREEDOM FROM TLR AT 3 YEARS<sup>3</sup>**  
When nominally deployed\*



**HIGH COMPRESSION RESISTANCE<sup>1</sup>**



**LOW CHRONIC OUTWARD FORCE<sup>1</sup>**

*Didels radialins jgos ir lankstus.*



**HIGH FLEXIBILITY<sup>2</sup> AND FRACTURE RESISTANCE<sup>3</sup>**

\*Nominal deployment is defined as the stent length upon deployment being within +/- 10% of the labeled stent length. This data is from a non-powered post-hoc analysis.

**Information contained herein for PRESENTATION in Europe, Middle East and Africa ONLY. Please check the regulatory status of the device before distribution in areas where CE marking is not the regulation in force.**

©2020 Abbott. All rights reserved. 2-EH-4-11331-01 06-2020

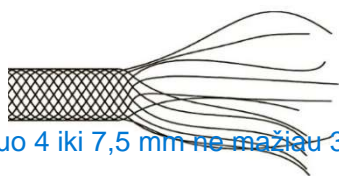
# Supera™ Peripheral Stent System

## VASCULAR MIMETIC STENT

- Self-expanding nitinol stent with Vascular Mimetic Technology
- 6 closed-end interwoven nitinol wires

## SIZE MATRIX

- 4.5, 5.5, 6.5, 7.5 diameter sizes
- **New sizes added: 5.0 mm and 6.0 mm diameters**
- 20–200 mm lengths, depending on diameter
- 80 cm and 120 cm catheter lengths



Diametrai turi būti nuo 4 iki 7,5 mm ne mažiau 3 skirtingi diametrai. ; ilgiai – nuo 40 iki 200 mm ( 3 skirtingi ilgi).

## DELIVERY SYSTEM

- Unique deployment ratchet design
- 0.014" and 0.018" guide wire compatible
- 6F sheath compatible
- 80 cm and 120 cm lengths
- Two-year shelf life

Skirti darbui tiek su 0,014", tiek 0,018" viela pravedju ir 6 F vedimo sistema.

vedimo sistemos ilgis 80 ir 120 cm



Data on file at Abbott.

Information contained herein for PRESENTATION in Europe, Middle East and Africa ONLY. Please check the regulatory status of the device before distribution in areas where CE marking is not the regulation in force.

©2020 Abbott. All rights reserved. 2-EH-4-11331-01 06-2020

# Now with new sizes – 5.0 and 6.0 mm

## EXPANDED PRODUCT OFFERING - NEW SUPERA™ SIZE MATRIX

Stent Length (mm)										
Stent OD	20*	30*	40	60	80	100	120	150	180	200
4.5 mm	X*	X*	X	X	X	X	X	X		
5.0 mm	NEW*	NEW*	NEW	NEW	NEW	NEW	NEW			
5.5 mm	X*	X*	X	X	X	X	X	X	X	X
6.0 mm	NEW*	NEW*	NEW	NEW	NEW	NEW	NEW	NEW		
6.5 mm	X*	X*	X	X	X	X	X	X	X	X
7.5 mm	X*	X*	X	X	X	X				

\* Only available in 120 cm catheter length, all remaining diameters available in both 80 cm and 120 cm lengths

Information contained herein for PRESENTATION in Europe, Middle East and Africa ONLY. Please check the regulatory status of the device before distribution in areas where CE marking is not the regulation in force.

©2020 Abbott. All rights reserved. 2-EH-4-11331-01 06-2020

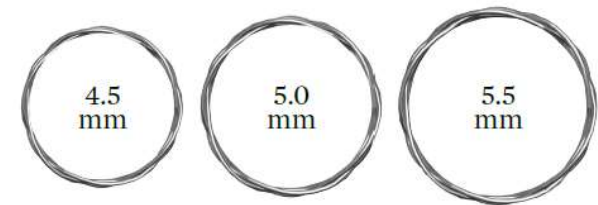
## Improve 1:1 stent to vessel sizing - smaller vessel diameters

### Stent selection can be challenging for vessels small diameter vessels

- What if the target vessel is even slightly larger than 4.5 mm?
  - with current Supera™ size matrix the next size available is 5.5 mm
  - this requires vessel prep with a PTA > 5.5 mm

### With new Supera™ sizes, the 5.0 mm stent allows for

- intermediate option between 4.5 mm and 5.5 mm stents
- improved 1:1 stent to vessel sizing in smaller vessels
- optimal luminal gain



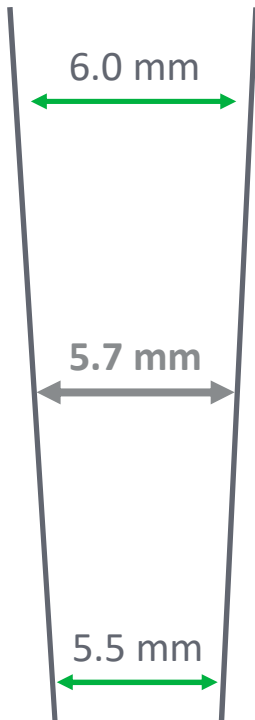
**NEW**

Data on file at Abbott.

**Information contained herein for PRESENTATION in Europe, Middle East and Africa ONLY. Please check the regulatory status of the device before distribution in areas where CE marking is not the regulation in force.**

©2020 Abbott. All rights reserved. 2-EH-4-11331-01 06-2020

# Improve 1:1 stent to vessel sizing - longer lesions and tapered vessels

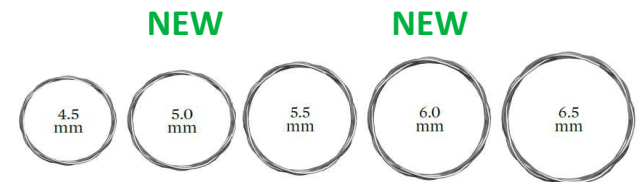


**Long lesions can be challenging, as they may require multiple stents over a tapered vessel**

- Current 1 mm increment between stent diameters might not be ideal when overlapping stents
- Overlapping stents with 1mm difference, might not respect gradual vessel tapering, leading to unnecessary oversizing

**With new Supera™ sizes, the 5.0 and 6.0 mm stent allow for**

- intermediate option between 4.5mm / 5.5 mm / 6.5 mm stents
- improved 1:1 stent to vessel sizing for single or multiple stents in tapered vessels
- optimal luminal gain



Data on file at Abbott.

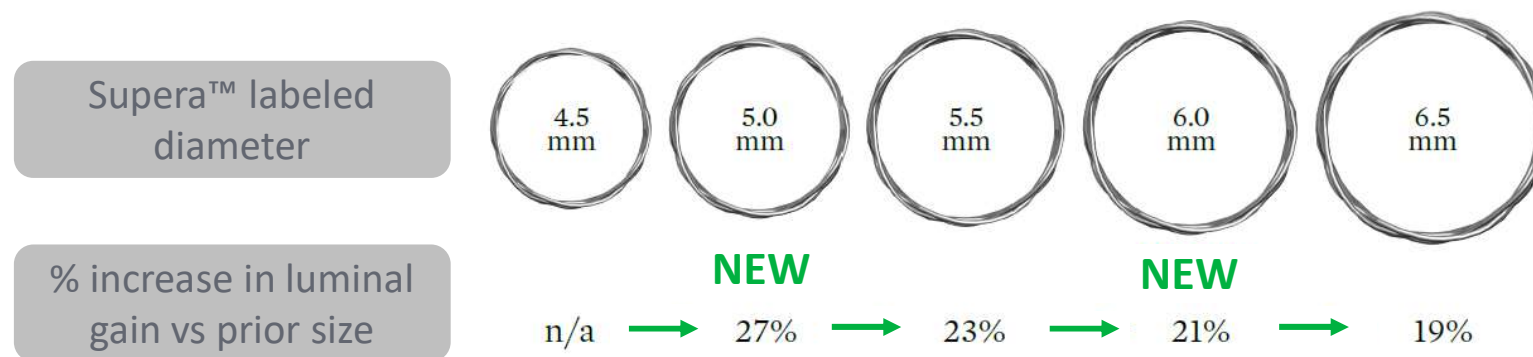
**Information contained herein for PRESENTATION in Europe, Middle East and Africa ONLY. Please check the regulatory status of the device before distribution in areas where CE marking is not the regulation in force.**

©2020 Abbott. All rights reserved. 2-EH-4-11331-01 06-2020

# Optimize luminal gain for the vessel

## Having the right stent sizes can optimize vessel luminal gain

- With addition of new Supera™ sizes, you can now upsize or downsize as needed in 0.5 mm increments to optimize luminal gain across all vessel sizes
- A small increase of 0.5 mm in diameter provides significant increase of ~ 23% in luminal gain

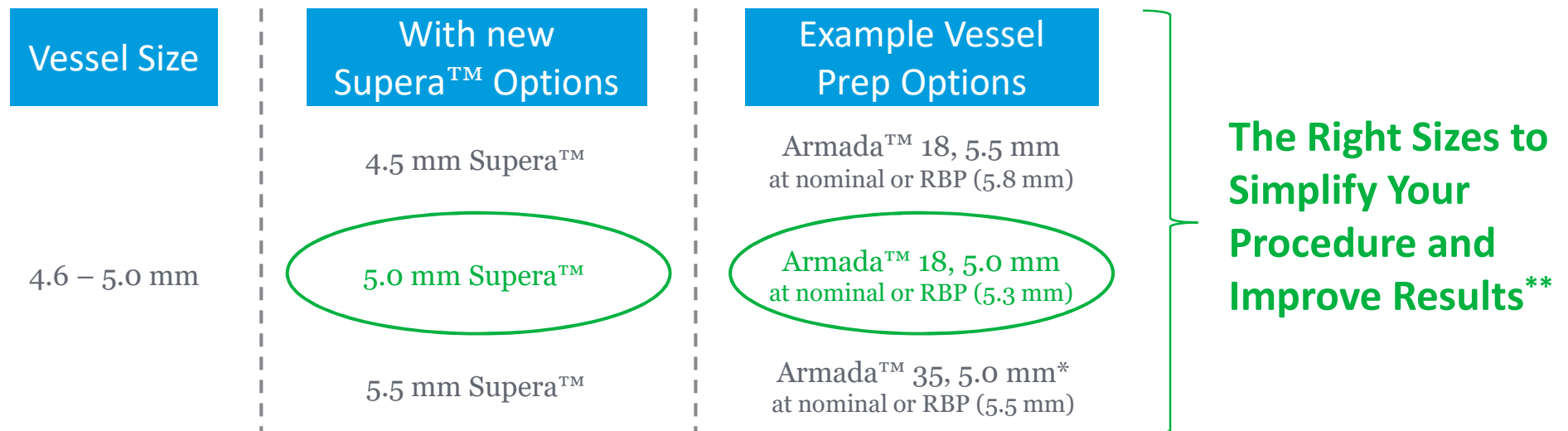


Data on file at Abbott.

Information contained herein for PRESENTATION in Europe, Middle East and Africa ONLY. Please check the regulatory status of the device before distribution in areas where CE marking is not the regulation in force.

©2020 Abbott. All rights reserved. 2-EH-4-11331-01 06-2020

# Simplify decisions around vessel prep



\*RBP for Armada™ 35 balloons and the associated diameter at RBP depends on both diameter and length of the balloon. In the examples shown, the 5.0 mm x 60 mm balloon is 5.5 mm at RBP.

\*\* Proper sizing, preparation, and deployment technique result in excellent patency rates<sup>3</sup>

**Information contained herein for PRESENTATION in Europe, Middle East and Africa ONLY. Please check the regulatory status of the device before distribution in areas where CE marking is not the regulation in force.**

©2020 Abbott. All rights reserved. 2-EH-4-11331-01 06-2020



# Simplify decisions around vessel prep

## The Right Sizes to Simplify Your Procedure and Improve Results\*

Ø REFERENCE VESSEL	Ø SUPERA™ STENT	MINIMAL BALLOON DIAMETER	OUR OFFERING FOR PRE-DILATATION	
			OPTION 1	OPTION 2
4.0 mm – 4.5 mm	4.5 mm	4.5 mm	Armada™ 18 5.0 (nominal)	Armada™ 35 5.0 (nominal)
4.6 mm – 5.0 mm	5.0 mm	5.0 mm	Armada™ 18 5.0 (RBP 5.3)	Armada™ 18 5.5 (nominal)
5.1 mm – 5.5 mm	5.5 mm	5.5 mm	Armada™ 18 5.5 (RBP 5.8)	Armada™ 18 6.0 (nominal)
5.6 mm – 6.0 mm	6.0 mm	6.0 mm	Armada™ 18 6.0 (RBP 6.3)	Armada™ 35 6.0 (nominal)
6.1 mm – 6.5 mm	6.5 mm	6.5 mm	Armada™ 35 7.0 (nominal)	Armada™ 35 6.0 (RBP 6.7)
6.5 mm – 7.5 mm	7.5 mm	7.5 mm	Armada™ 35 8.0 (nominal)	Armada™ 35 7.0 (RBP 7.7)

\*Proper sizing, preparation, and deployment technique result in excellent patency rates<sup>3</sup>

**Information contained herein for PRESENTATION in Europe, Middle East and Africa ONLY. Please check the regulatory status of the device before distribution in areas where CE marking is not the regulation in force.**

©2020 Abbott. All rights reserved. 2-EH-4-11331-01 06-2020

Supera™ is like no other stent.  
Now with 5.0 and 6.0 mm diameters.

1

Improve 1:1 stent to  
vessel sizing

2

Optimize luminal gain

3

Simplify decisions  
around vessel prep

The Right Sizes to Simplify Your Procedure and Improve Results\*

Results Matter. Platform Matters.

\*Proper sizing, preparation, and deployment technique result in excellent patency rates<sup>3</sup>

Information contained herein for PRESENTATION in Europe, Middle East and Africa ONLY. Please check the regulatory status of the device before distribution in areas where CE marking is not the regulation in force.

©2020 Abbott. All rights reserved. 2-EH-4-11331-01 06-2020

# Supera™ is like no other stent. Results Matter. Platform Matters.



**91%**  
**PATENCY (K-M) AT 1 YEAR³**  
When nominally deployed\*



**94%**  
**FREEDOM FROM TLR AT 3 YEARS³**  
When nominally deployed\*



**HIGH COMPRESSION RESISTANCE¹**



**LOW CHRONIC OUTWARD FORCE¹**



**HIGH FLEXIBILITY² AND FRACTURE RESISTANCE³**

\*Nominal deployment is defined as the stent length upon deployment being within +/- 10% of the labeled stent length. This data is from a non-powered post-hoc analysis.

**Information contained herein for PRESENTATION in Europe, Middle East and Africa ONLY. Please check the regulatory status of the device before distribution in areas where CE marking is not the regulation in force.**

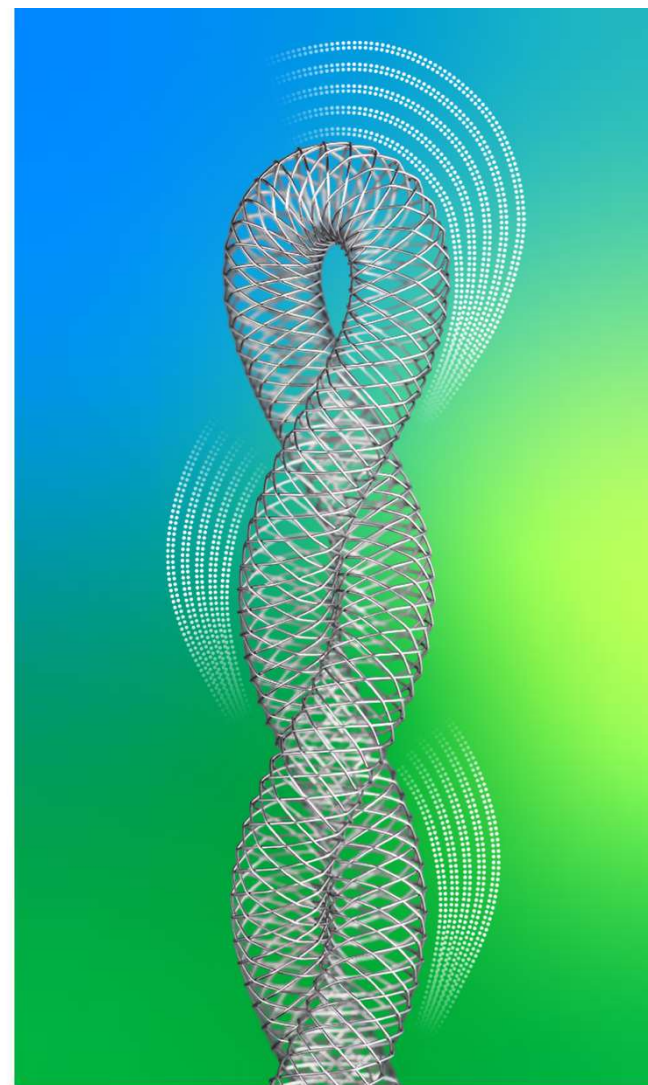
©2020 Abbott. All rights reserved. 2-EH-4-11331-01 06-2020

## PRODUCT PRESENTATION

# Appendix

**Information contained herein for PRESENTATION in Europe, Middle East and Africa ONLY. Please check the regulatory status of the device before distribution in areas where CE marking is not the regulation in force.**

©2020 Abbott. All rights reserved. 2-EH-4-11331-01 06-2020



# Supera™ CE Barcodes 120 cm catheter – new size matrix with 5.0 and 6.0 mm

Stent Diameter (mm)	STENT LENGTH (mm)									
	20	30	40	60	80	100	120	150	180	200
4.5	42045020-120	42045030-120	42045040-120	42045060-120	42045080-120	42045100-120	42045120-120	42045150-120	-	-
5.0	42050020-120	42050030-120	42050040-120	42050060-120	42050080-120	42050100-120	42050120-120	-	-	-
5.5	42055020-120	42055030-120	42055040-120	42055060-120	42055080-120	42055100-120	42055120-120	42055150-120	42055180-120	42055200-120
6.0	42060020-120	42060030-120	42060040-120	42060060-120	42060080-120	42060100-120	42060120-120	42060150-120	-	-
6.5	42065020-120	42065030-120	42065040-120	42065060-120	42065080-120	42065100-120	42065120-120	42065150-120	42065180-120	42065200-120
7.5	42075020-120	42075030-120	42075040-120	42075060-120	42075080-120	42075100-120	-	-	-	-

Information contained herein for PRESENTATION in Europe, Middle East and Africa ONLY. Please check the regulatory status of the device before distribution in areas where CE marking is not the regulation in force.

©2020 Abbott. All rights reserved. 2-EH-4-11331-01 06-2020

Data on file at Abbott.

# Supera™ CE Barcodes 80 cm catheter – new size matrix with 5.0 and 6.0 mm

Stent Diameter (mm)	STENT LENGTH (mm)									
	20	30	40	60	80	100	120	150	180	200
4.5	-	-	42045040-080	42045060-080	42045080-080	42045100-080	42045120-080	42045150-080	-	-
5.0	-	-	42050040-080	42050060-080	42050080-080	42050100-080	42050120-080	-	-	-
5.5	-	-	42055040-080	42055060-080	42055080-080	42055100-080	42055120-080	42055150-080	42055180-080	42055200-080
6.0	-	-	42060040-080	42060060-080	42060080-080	42060100-080	42060120-080	42060150-080	-	-
6.5	-	-	42065040-080	42065060-080	42065080-080	42065100-080	42065120-080	42065150-080	42065180-080	42065200-080
7.5	-	-	42075040-080	42075060-080	42075080-080	42075100-080	-	-	-	-

Information contained herein for PRESENTATION in Europe, Middle East and Africa ONLY. Please check the regulatory status of the device before distribution in areas where CE marking is not the regulation in force.

©2020 Abbott. All rights reserved. 2-EH-4-11331-01 06-2020

Data on file at Abbott.

1. Competitors tested include Astron Pulsar-18, Complete SE, EverFlex, Innova, LifeStent, Misago, S.M.A.R.T., and Zilver PTX Test(s) performed by and data on file at Abbott.
2. Flexibility is defined as kink resistance. Competitors tested include Astron Pulsar-18, Complete SE, Everflex, Innova, LifeStent, Misago, S.M.A.R.T., and Zilver PTX. Test(s) performed by and data on file at Abbott.
3. Garcia L. et al., *SUPERB final 3-year outcomes using interwoven nitinol biomimetic Supera stent., Catheterization and Cardiovascular Interventions* 2017 Jun 1;89(7):1259-1267.

CAUTION: This product is intended for use by or under the direction of a physician. Prior to use, reference the Instructions for Use, inside the product carton (when available) or at [eifu.abbottvascular.com](http://eifu.abbottvascular.com) or at [medical.abbott/manuals](http://medical.abbott/manuals) for more detailed information on Indications, Contraindications, Warnings, Precautions and Adverse Events.

Illustrations are artist's representations only and should not be considered as engineering drawings or photographs. Photo(s) on file at Abbott. Data on file at Abbott.

**Information contained herein for PRESENTATION in Europe, Middle East and Africa ONLY.** Please check the regulatory status of the device before distribution in areas where CE marking is not the regulation in force.

**Abbott Vascular International BVBA**

Park Lane, Culliganlaan 2B, 1831 Diegem, Belgium, Tel: 32.2.714.14.11

<sup>TM</sup> Indicates a trademark of the Abbott Group of Companies.

[www.cardiovascular.abbott](http://www.cardiovascular.abbott)

©2020 Abbott. All rights reserved. 2-EH-4-11331-01 06-2020



**Abbott**